



Project

—
#museunacionalvive

REPORT 2022

ABSTRACT

INTRODUCTION 4

PAÇO DE SÃO CRISTÓVÃO 6

RESTORATION AND SERVICES

Facades and roofing 7

Restoration of Sculptures 11

Archaeological monitoring 13

PROJECTS AND CONSULTING 15

Architecture and Restoration 16

Complementary Projects 18

and Consulting

Museography, Visual

Communication and Universal 19

Accessibility

Technical Risk Management Group 21

PARTNERSHIPS 22

CENTRAL LIBRARY 24

RESEARCH AND EDUCATION CAMPUS 28

MUSEUM AND SOCIETY 32

“Luzia and Berthasaura in
Madureira” Exhibit 33

Museu Nacional Vive
no Bicentenário 35

Recompõe.mineralogia
exhibit 36

Centennial sculptures 37

“Museu Nacional Vive” 38

Open-air exhibit

Artistic attractions 39

Educational initiatives 43

Education and Culture 43

Campaign for recomposition
of collections 44

Virtual mineralogy exhibit 47

THE PROJECT IN THE MEDIA

Press repercussions 48

Social Media 49

MANAGEMENT AND TRANSPARENCY

Governance 51

Preliminary budget 52

Fundraising 53

Timeline 54

BODIES RESPONSIBLE FOR WORKS

Steering Committee 55

Institutional Committee 56

Management Technical Workgroup 57

After Inauguration Safety and 57

Sustainability Workgroup

Technical Team 58

Managing Institutions 58

Researchers and consultants 59

(new exhibits)

Designers, companies 60

and technical consultants



INTRODUCTION

2022: A YEAR FULL OF GOOD NEWS FOR THE **MUSEU NACIONAL/UFRJ**

The last cycle of the **Project Museu Nacional Vive** was marked by important advances in restoration and services, development of technical projects and social engagement in the reconstruct of the **Brazilian's first scientific institution**.

As a result of a technical cooperation agreement between Federal University of Rio de Janeiro (UFRJ), the Organization of the United Nations for Education, Science and Culture (UNESCO) and the Vale Cultural Institute, **the strength of the project is steadily increasing**, with financial support received from the National Bank of Economic and Social Development (BNDES), platinum sponsorship from Bradesco and Vale; support from the Brazilian Ministry of Education (MEC), Ministry of Science, Technology and Innovation (MCTI), Brazil's National Congress, the Legislative Assembly of the State of Rio de Janeiro (ALERJ) and the Federal Government through means of the Cultural Incentive Law.

In September 2002, we celebrated the Brazil's Bicentennial Independence Day with the community. **We delivered the main facade of Paço de São Cristóvão (headquarter of the Museum) fully restored**. The unveiling was a very significant achievement that made possible for local population and visitors of Quinta da Boa Vista park to be reacquainted with the institution through **exhibits, cultural presentations and educational activities**.

The Municipality of Rio de Janeiro developed conservation works and services at Quinta da Boa Vista park that were decisive for the success of celebrations, also providing lighting for palace's historical facade.

The commitment of professionals and specialists from different technical areas was fundamental in moving forward with the **expansion and modernization of the Central Library and implementation of the Research and Education Campus**, at which the new Central Laboratory for Conservation and Restoration of the Museu Nacional/UFRJ has already been installed.

New audiences were reached through strategic partnerships and the involvement of researchers from the Museum. This included approximately **500 students from the Rio school system** that visited the exhibit "Luzia and *Berthasaura* in Madureira".

This report is our invitation to delve into the activities carried out as part of the project in recent months in order for one to better understand the challenges and results that are the driving force behind the rebuilding of Brazil's oldest museum.

We hope that you enjoy the report, and as always, you can keep up with news of the Project at museunacionalvive.org.br

Steering Committee

Project Museu Nacional Vive



Watch a video
describing the Project's
achievements in 2022



Also available to be read:
2020-2021
Activity Report

PALÁCIO DE SÃO CRISTÓVÃO



CREDITS: FELIPE COMEN/PROLETO MNU

RESTORATION AND SERVICES

FACADES AND ROOFING

Four years after the tragic fire that occurred in 2018, **Paço de São Cristóvão's main facade** has been completely restored.

The ochre yellow of the palace's facade and the green of its doors harken back to the colors of Brazil's imperial period, highlighting the Project's commitment to preserving the structure's identity and architectural history.



CREDITS: FELIPE COHEN/PROJETO MMV

- Start at the historical wing in November 2021
- More than 200 professionals involved in works
- Consolidation of internal stonework

- Production of railings and 150 new frames
- Concrete and waterproofed roof slabs installed in Wing 1
- Improvement of the rainwater capture system
- Lightning protection system
- Metallic reinforcement in spans



CREDITS: FELIPE COHEN/PROJETO MNV



FOTO: FELIPE COHEN/PROJETO MNV



CREDITS: FELIPE COHEN/PROJETO MNV

RESTORED DOOR ORNAMENTS



CREDITS: FELIPE COHEN/PROJETO MNV

SIDE FACADES OF THE PALACE ARE ALSO BEING RESTORED



"It's very emotional experience getting to be up close to this facade. After everything we saw on TV, the destruction that the fire caused, it's wonderful to see such a high level of commitment to restoration works!"

Simone Mattos
Civil servant



"The Museum's facade has been completely restored. It looks wonderful.

I hope that, in a few years, we'll be able to visit the innumerable riches offered the museum the same way that we are seeing them from the outside.

This is a moment that gives you great pride in our nation. "

Dalal Achcar
Ballerina and choreographer



[Watch the video on the restoration of facades and roofing](#)

RESTORATION AND SERVICES

CARRARA MARBLE SCULPTURES

CREDITS: FELIPE COHEN/PROJETO MNV

The palace's sculptural ensemble consists of **30 centennial pieces**, weighing between **200 and 300 kilos each**. These sculptures were thoroughly restored through a process involving technical cleaning procedures, marble strengthening, the reinforcing of internal structures, and the filling in of small cracks and fissures.

The restoration of the pieces also allowed mortar replicas to be produced, which are already positioned the monument's main facade. The original sculptures are now part of the collection of the Museu Nacional/UFRJ's historical pieces.



[Watch a minidoc on the restoration of sculptures](#)



CREDITS: FELIPE COHEN/PROJETO MNV

REPLICAS OF THE SCULPTURES INSTALLED
AT THE TOP OF THE PALACE



CREDITS: FELIPE COHEN/PROJETO MNV

REPLICAS WERE PRODUCED WITH MORTAR



"I have been working in the area for 30 years and had never seen this many sculptures being restored and reproduced at once."

We worked to combining artisanry and traditional techniques with cutting-edge technology and scientific knowledge, including chemical and laboratory analysis, laser scanning and 3D reproduction of the sculptures in order to develop a mortar that is compatible and very close to what is found in other areas of the palace."

Wallace Caldas

Manager responsible for restoration works performed on facades and roofing in the Palace's wing 1

RESTORATION AND SERVICES

ARCHAEOLOGICAL MONITORING



CREDITS: FELIPE COHEN/PROJETO MNV

Amid the works carried out at Paço de São Cristóvão, UFRJ archaeologists have also made advances in monitoring, prospecting and archaeological restoration of this historical site. These works reveals information related to the building and its occupants throughout different periods in history, in addition to contributing to the development of architecture and restoration projects.

Certain artifacts and architectural findings have already been revealed. These findings include parts of the remaining structure of an old chapel, traces of floors and walkways that connected the courtyard of Princess Garden's Fountain, fragments of porcelain, an ancient masonry stove and other artifacts related to the palace's former Guard House.



[Watch a minidoc
on archaeological
monitoring](#)



CREDITS: FELIPE COHEN/PROLETO.MNV

PORCELAIN FRAGMENT FOUND IN EXCAVATIONS



CREDITS: FELIPE COHEN/PROLETO.MNV

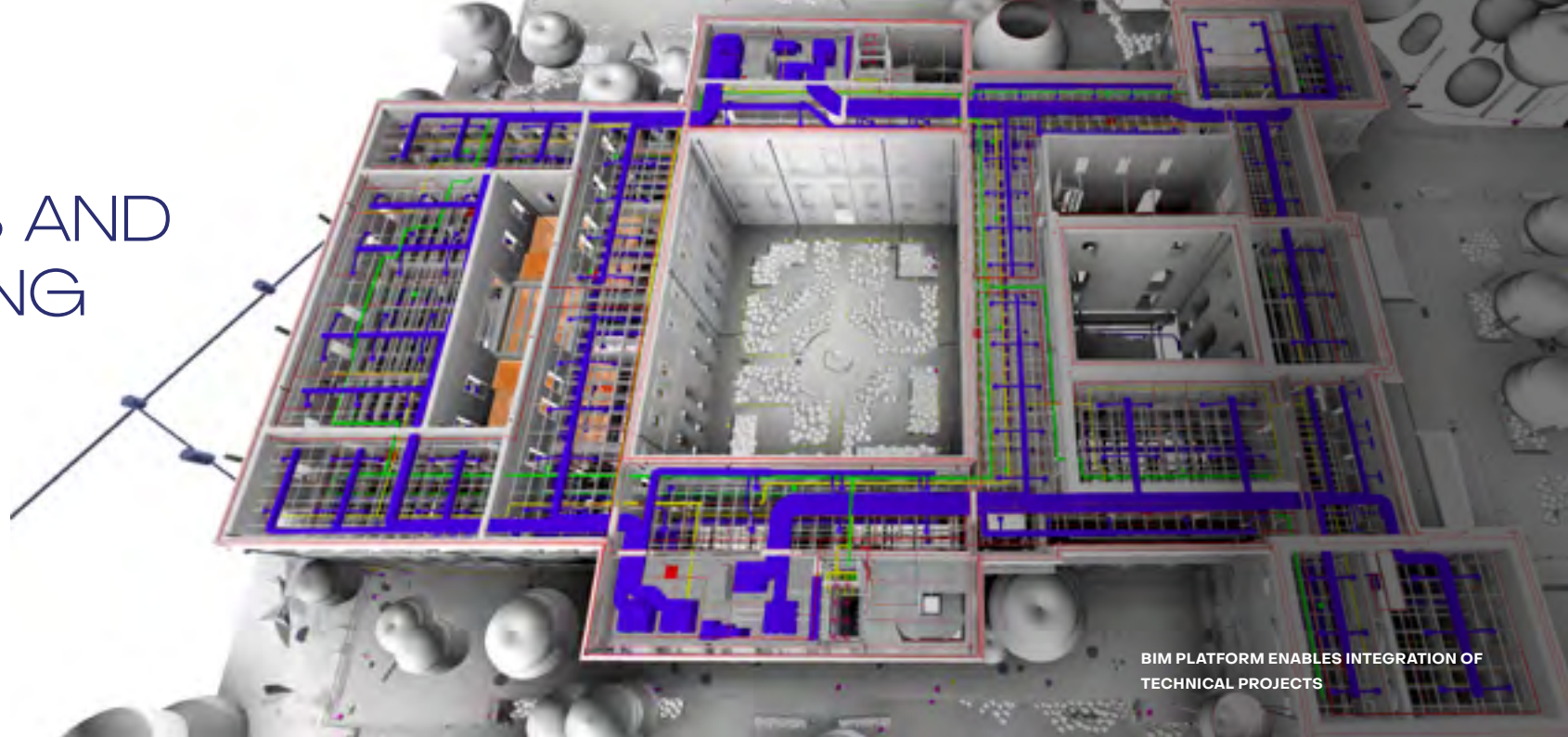
ANCIENT FLOOR WHICH CONNECTED GARDENS WAS UNVEILED



"These findings will allow future visitors to be exposed to the Museum's archaeology, whether it be architectural structures that were previously covered and that help detail the rich history of the building that housed Brazil's Royal and Imperial Family, and the recovery of artifacts that tell the story of the people that lived and worked on the premises of the Palace."

Prof. Marcos André Torres de Souza
Coordinator of the research and archaeological monitoring

PROJECTS AND CONSULTING



A high level of technical quality, collaboration and the use of new technologies guide the development of projects aimed at rebuilding the site of the Museu Nacional/UFRJ.

More than 100 specialists across thirty different areas, such as architecture and restoration, lighting, air conditioning, building systems and sustainability are working together through means of a virtual platform provided by the BIM (Building Information Modeling) system.

Integrated development, which is carried out using 3D plans and models, allows financial resources to be optimized and prevents the solutions presented for each area from coming into conflict.

The most emblematic result of this collaborative process in 2022 was the **Preliminary Design for Restoration and Architecture at Paço de São Cristóvão and renovation of the Alípio de Miranda Ribeiro Annex**, which was submitted to the National Institute of Historic and Artistic Heritage (IPHAN) in August.



PROJECTS AND CONSULTING

PRELIMINARY DESIGN FOR ARCHITECTURE AND RESTORATION

- Involvement **specialists** with knowledge of projects aimed at the preservation of heritage
- Commitment to **expanding the connections** that the Museum shares with the gardens at Quinta da Boa Vista
- Adherence to premises for **accessibility, safety, environmental comfort, circulation and sustainability**
- Preservation of the largest possible number of **artistic and historical elements**
- **Photographic surveys** and a study of the conditions existing before the fire
- Extensive **historical research**
- Architectural **analysis** of the palace
- **Diagnostics and proposals** for interventions



PRELIMINARY PROJECT SUGGESTS THE PROTECTION OF THE MONUMENTAL STAIRCASE



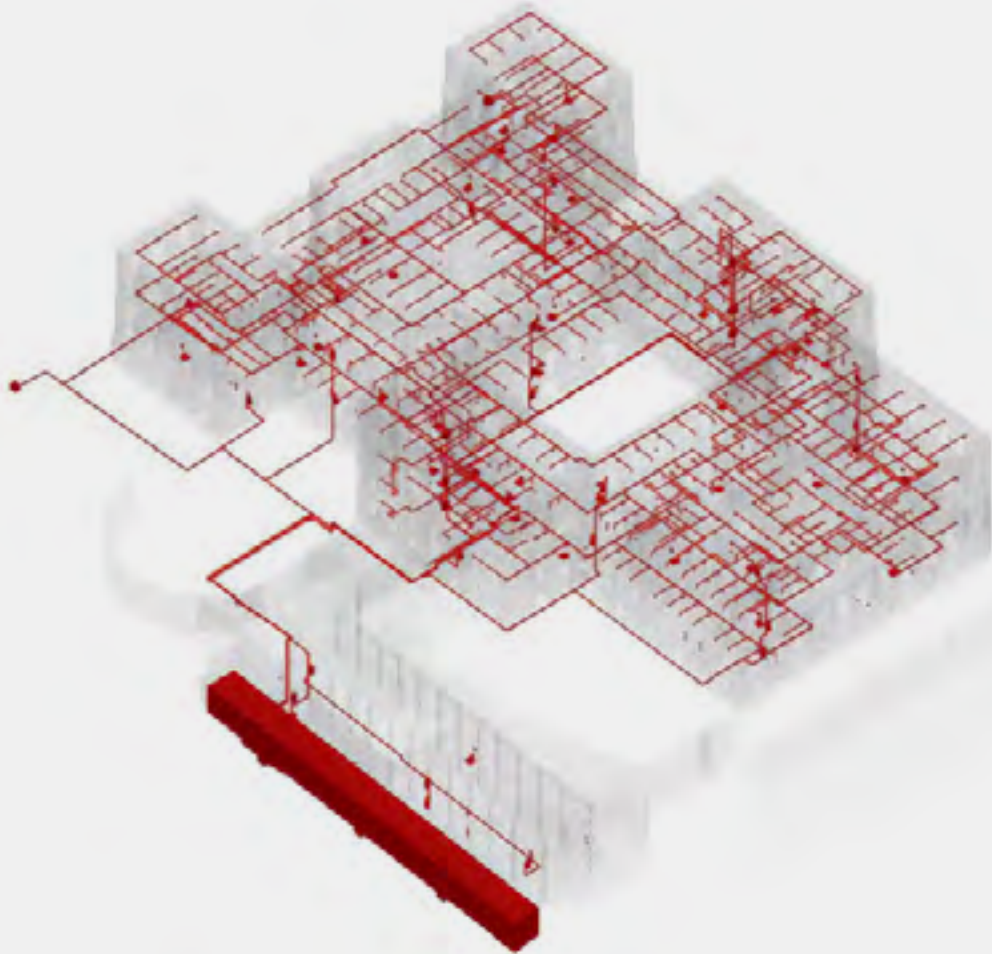
"This process of working with the BIM system in order to rebuild a listed heritage site with the scale of the Museu Nacional/ UFRJ is a pioneering endeavor in Brazil. With the technical capacity and the spirit of collaboration among those involved, we are steadily overcoming challenges and developing integrated projects, with permanent controls for the quality of archives, verification of models and the correction of potential conflicts between projects."

Sérgio Leusin
BIM Coordinator



"Our project started with extensive historical research in order to ensure that decision making, particularly with regards to the restoration strategy, were guided by an understanding of the history of this registered heritage site. The architectural complex at which the Museu Nacional/ UFRJ is located today was not built all at once. It is the result of a process of historical transformations, renovations, demolitions, improvements and damage suffered over time. Developing an understanding of these different historical layers is a very important dimension of the project. "

Pablo Hereñu
Coordinator of architectural design and restoration



COMPLEMENTARY DESIGNS AND CONSULTING

Project Management

Consulting aimed at supporting, integrating, and coordinating BIM processes

Structure, Geotechnics and Surveying

Study into Environmental Comfort, Climate and Exhaustion

Special Installations

Technical Lighting

Anchoring Points

Landscaping

Drainage Project

Building Facilities

Sustainability, including a Waste Management Plan

Vertical transport

Acoustics

Waterproofing

Glass and window frames

Approval from Rio de Janeiro's military firefighter corps

Development of narratives for long-term exhibits

Museography, visual communication and universal accessibility



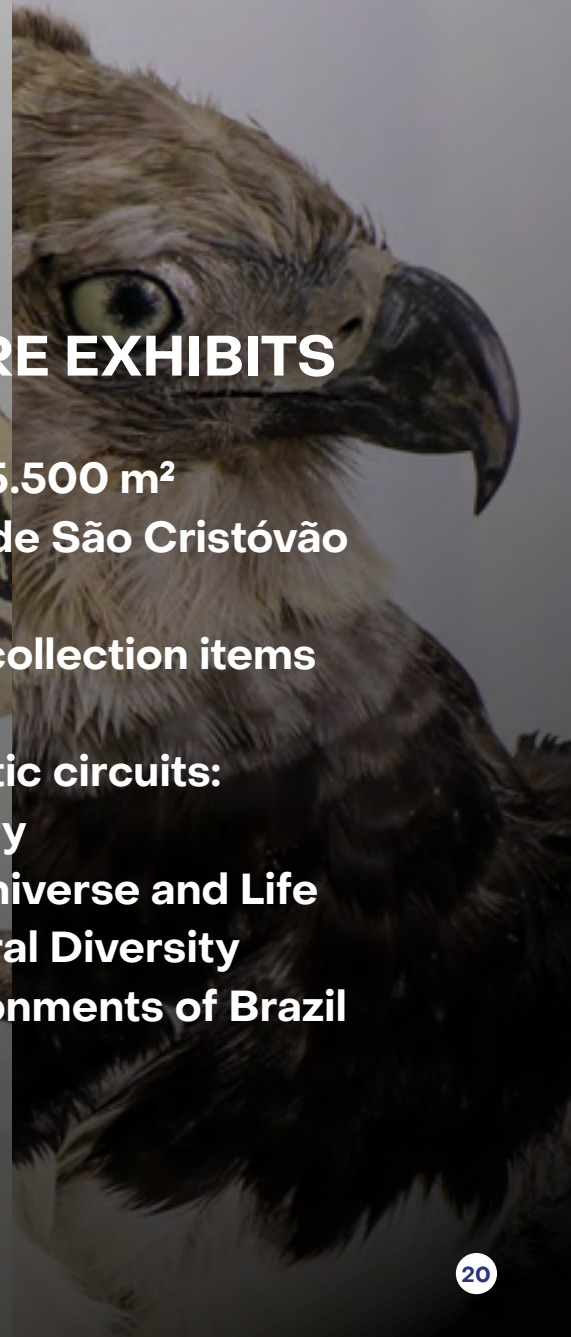
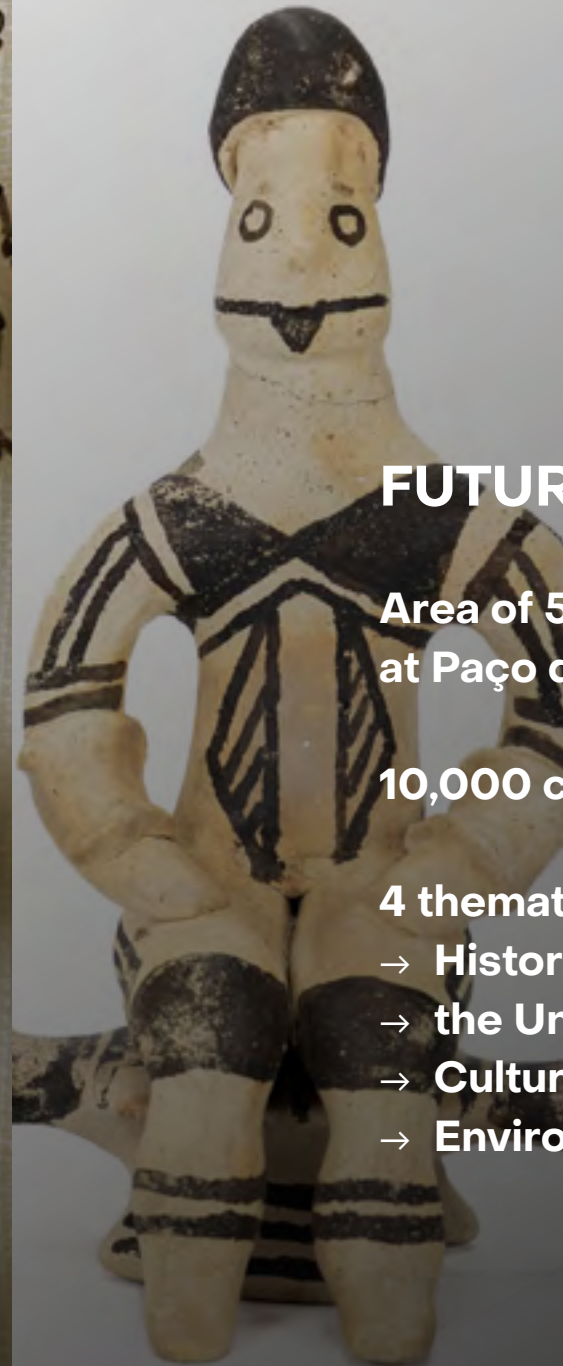
CREDITS: FELIPE COHEN/PROJETO MNV

PROJECTS AND CONSULTING MUSEOGRAPHY

The planning of the new museography for the Museu Nacional/UFRJ is guided by **the thematic guide for future exhibits** prepared by the institution's Curation Committee together with researchers and consultants contracted by UNESCO. Specialists from UFRJ with different areas of knowledge and consultants from the Project Museu Nacional Vive are working together to plan spaces that will mesmerize visitors and offer a change for reflection and learning.

Through means of a public bid notice coordinated by UNESCO, contracting for the development of **designs for museography, visual communication and universal accessibility was carried out in 2022**. The company EXPOMUS, which was selected, has more than 40 years of experience working with museums and exhibits both in Brazil and overseas.

Consulting for the development of the content and **concepts behind narratives** for the **new exhibits** is also being provided, including suggestions for the flow of visitors and organization of the content of different spaces at Paço de São Cristóvão.



FUTURE EXHIBITS

**Area of 5.500 m²
at Paço de São Cristóvão**

10,000 collection items

4 thematic circuits:

- **History**
- **the Universe and Life**
- **Cultural Diversity**
- **Environments of Brazil**

PROJECTS AND CONSULTING

TECHNICAL RISK MANAGEMENT GROUP

In order to prevent risks to the Museum's collection and the monument, proposals for interventions at the palace are analyzed and receive technical guidance from the Working Group for Risk Management, the Environment, Prevention, Preservation and Restoration, which consists of specialists in the preservation of heritage. This working group is coordinated by UNESCO.

PARTICIPANTS:

UNESCO

International Centre for the Study of the Preservation and Restoration of Cultural Property (ICCROM)

Center for the Preservation and Restoration of Cultural Property (CECOR/UFGM)

Fiocruz

Arquivo Nacional

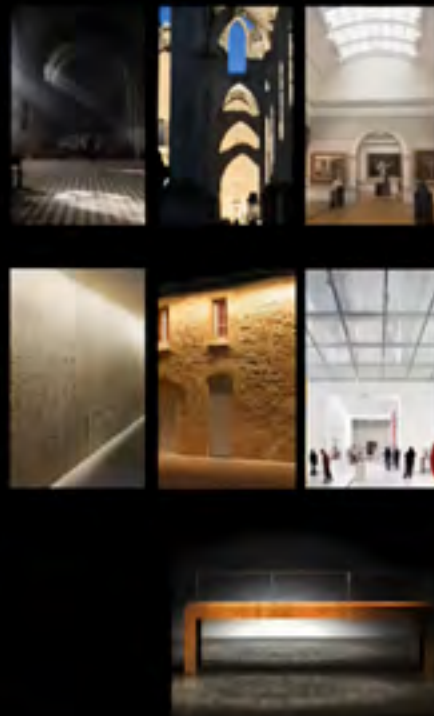
Museu Nacional/UFRJ

PAÇO - BLOCO 01

CORTE



MOODBOARD





GARDEN TERRACE IS REVITALIZED

PROJECTS AND CONSULTING PARTNERSHIPS

The Municipality of Rio de Janeiro's involvement in works and requalification services at Quinta da Boa Vista were central to the achievements made by the **Project Museu Nacional Vive** in 2022.

In addition to conserving and illuminating the Terrace Garden in front of Paço de São Cristóvão, the Municipality made it possible to illuminate the monument's facade and improved the surrounding lawns and areas of asphalt.

- Conservation and Lighting Works for Terrace Garden
- Lighting in monument's facade
- Public lighting and new surrounding asphalt



CENTRAL LIBRARY



One of the most important scientific libraries in the country, the Museu Nacional/UFRJ's Central Library underwent the largest renovation and expansion works in its history.

Located in Quinta da Boa Vista's Botanical Garden, the unit houses a collection of more than 500 thousand volumes, including rare works that once belonged to Brazil's Imperial family.

The building will also house the Francisca Keller Library, which specializes in Anthropology; the Center for Documentation of Indigenous Languages (CELIN); and the Museu Nacional/UFRJ's Archive and Memory Section (SEMAR).

- Over **1.200 m²** of built area
 - Auditorium with **120** renovated seats
 - New **multipurpose classrooms** for lectures, reading, and the safekeeping of publications
 - **New cabinets** for professors
 - Audiovisual room and **restoration and conservation** laboratory
 - **Renovation and requalification** of spaces
 - Installation of **data network and cameras**
 - Fire prevention and **firefighting system**
 - **Functional program** distributed on three floors
- Elevators and cooling system currently **being installed**
 - Library expected to be unveiled in **March 2023**



RESEARCH AND EDUCATION CAMPUS

CAMPUS

CREDITS: FELIPE COHEN / PROJETO MNV

The implementation of the **Research and Education Campus** will allow the Palace to be entirely dedicated to exhibits and educational activities.

2022 saw progress in works for the installation of Research Departments, a new **Visitor Center (National Museum Station)**, and the **Central Laboratory for Conservation and Restoration** on the land of 44,000 m² property located next to Quinta da Boa Vista, which has housed the Museum's **administrative module** since 2020.



"The Visitors Center is a museum education space that will initially receive school visits and will be inaugurated during the first half of 2023. Our first on-site exhibit will include collections from the National Museum and focused on scientific dissemination, presenting the results of research carried out throughout the previous four years by the institution's various departments."

Juliana Sayão
Director of Integration between Museum and Society



CREDITS: FELIPE COHEN/PROLETO MNV

CAMPUS

CENTRAL CONSERVATION AND RESTORATION LABORATORY (LCCR)

Construction of the laboratory was completed in October 2022. The modular structure has an area of 600m² and was planned to be used for the storage and treatment of collections that will compose the Museum's new long-term exhibits.



CREDITS: FELIPE COHEN/PROLETO MNV



MUSEUM AND SOCIETY



MUSEUM AND SOCIETY

'LUZIA AND BERTHASAURA IN MADUREIRA' EXHIBIT

To celebrate the 409th anniversary of Rio de Janeiro's traditional neighborhood, two important collections from the Museu Nacional/UFRJ were displayed at the Carioca Fernando Torres Arena between May and September.

Replicas of Luzia's skull (the oldest known human remains found in the Americas) and the fossil of *Berthasaura leopoldinae*, a dinosaur discovered in Paraná in 2021, were enjoyed by **more than 500 students** from the northern part of Rio de Janeiro.

Illustrative panels and a totem presenting audiovisual content complemented the visitor experience.





CREDITS: FELIPE COHEN/PROJETO MNV

"This partnership with the Project Museu Nacional Vive marked the beginning of the Culture Zones program, which allocates resources for cultural initiatives in different regions of Rio. Many people were attracted to the exhibit, heeding our call and reinforcing Madureira's place as a cultural centre in our city."

Marcus Faustini
Rio de Janeiro's Secretary of Culture



CREDITS: FELIPE COHEN/PROJETO MNV

"The initiative behind bringing a piece of the National Museum here to Madureira was extremely well-received. Students were very curious about the exhibit and encouraged their peers to visit as well."

This was indeed a once-in-a-lifetime opportunity! A seed was no doubt planted that will arouse these students' interest in knowledge, culture and science."

Marluce Baiense
Coordinator of Mario Penna da Rocha Municipal School (Honório Gurgel)



[View footage of the opening of the exhibit](#)



CREDITS: FELIPE COHEN/PROJETO MNV

MUSEUM AND SOCIETY

MUSEU NACIONAL VIVE DURING BICENTENNIAL

Temporary exhibits, educational activities and free cultural presentations marked our celebration of Brazil's Bicentennial Independence Day celebrations in September.

This program served to reacquaint the public with Quinta da Boa Vista and featured the Museum's restored facade and part of its collection.



CREDITS: FELIPE COHEN/PROLETO.MV

BICENTENNIAL

RECOMPÕE. MINERALOGIA

Seventeen small and large-sized minerals will occupy the palace's entrance hall (Bendegó meteorite room) until March 2023. For the first time after the 2018 fire, the public was able to approach the building and observe – from its central doors – a diverse series of minerals retrieved from the fire and new items recently acquired through the Museum's sponsorship from Vale under Brazil's Cultural Incentive Law.

"This is the first time I've been able to come here since the fire and I found this exhibit incredible, especially because I could see that the fire altered the characteristics of many minerals. Some changed their color, format...I found observing this transformation to be very interesting."

Leonardo Dalla





BICENTENNIAL

CENTENNIAL SCULPTURES

For the first time in the Museum's history, eight Carrara marble sculptures restored by the Project were available to the public up close. The exhibit, which presented pieces of Greek mythology, was installed in the Terrace Garden. From there, visitors were also able to observe the replicas that have been produced and installed along the edges of the building's roof.



BICENTENNIAL

'MUSEU NACIONAL VIVE' OPEN-AIR EXHIBIT

CREDIT S: FELIPE COHEN/PROJETO MNV



On display until February 2023, the exhibit includes photographs and stories that highlight the Museu Nacional/UFRJ's history and relevance in Brazil. Panels installed in the grove next to the Terrace Garden highlight important moments in the institution's history, the relationship between the public and the collections, the importance of the scientific activities carried out at the Museum, and the process of reconstruction after the fire in 2018.

"Our group loved the exhibits and we were very much welcomed. We had visited the museum a week before the fire, so it was very exciting to see the museum standing, the museum alive!"



"Another very emotional moment was when one of our students recognized her grandfather in a photograph that is in the open-air exhibition. He collaborated with the Museum's collections a long time ago. We found everything very interesting and will definitely return."

Brandira Proença

Coordinator | Cedro Educação Especial



CREDITS: FELIPE COHEN/PROLETOMNY

BICENTENNIAL

ARTISTIC PRESENTATIONS

Celebrations for Brazil's Bicentennial Independence and the delivery of Paço's restored façade included the participation of some of the greatest names in Brazilian art and culture.

The free program brought Quinta da Boa Vista to life and was made possible by support from the Rio de Janeiro Museum of Art, the Organization of Ibero-American States (OEI), the Municipal Secretariat of Culture, Bradesco, and Vale Cultural Institute.

CIA. BARCA DOS CORAÇÕES PARTIDOS



CREDITS: FELIPE COHEN/PROJETO MNV



"We are rediscovering ways to celebrate this area through our National Museum."

I was there (on the day of the fire) and saw the flames. I was certain that we would rebuild the Museum and, from there, reinvigorate Quinta and recognize its eternal importance!"

Marcos Frota
Actor, circus performer

UNICIRCO MARCOS FROTA



NOVA ORQUESTRA

CREDITS: FELIPE COHEN/PROJETO MNV



BRAZILIAN SYMPHONY ORCHESTRA WIND QUARTET

CREDITS: FELIPE COHEN/PROJETO MNV



“For us, the Brazilian Symphony Orchestra, it was a great honor and a joy to be able to be part of Brazil’s Independence Day celebrations as part of the Museu Nacional Vive on event. The Museum is such an important institution for our country.”

Luiza Sales
Production Manager – Brazilian Symphony Orchestra

#museunacionalvive
no **bicentenário**

CREDITS: FELIPE COHEN/PROJETO.MV



CIA. DE BALLET DALAL ACHCAR



[View footage
of the event here](#)



CREDITS: FELIPE COHEN/PROLETO MNV

BICENTENNIAL

EDUCATIONAL INITIATIVES

In partnership with the National Museum/ UFRJ's Educational Assistance Section, several educational initiatives were implemented at Quinta da Boa Vista between September and October 2022. A total of **3.541 people**, mainly children and adolescents, were accompanied in visits to the exhibits and participated in educational workshops.



CREDITS: FELIPE COHEN/PROLETO MNV

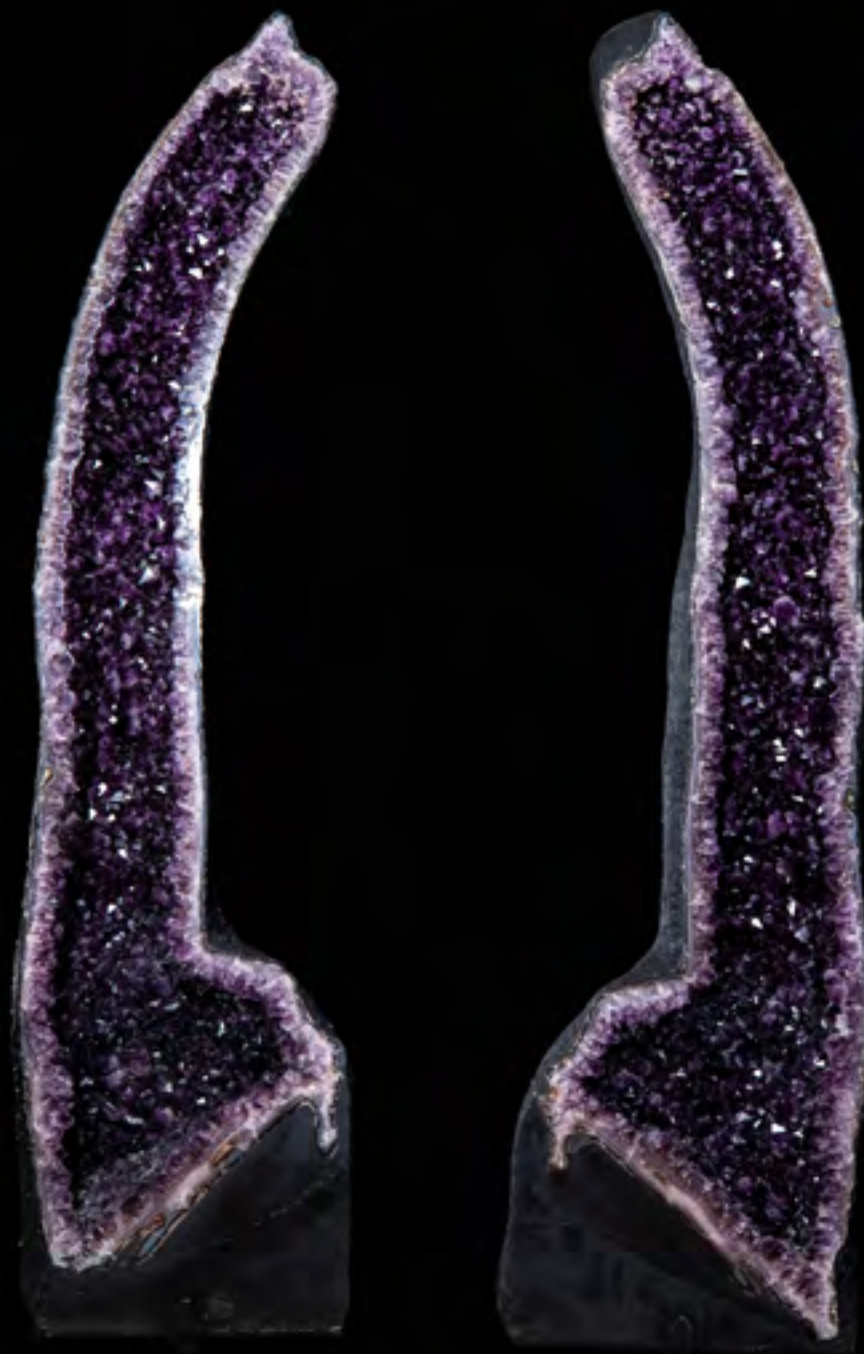
EDUCATION AND CULTURE

The MNV Project has been developing its education and culture program with consultation from specialists and the involvement of schools and museums in Rio de Janeiro. With the motto **Building a learned city through Education and Culture**, a museum education network is currently being formed. The main objective is to generate greater dialogue with regards to the educational practices of each institution involved, enhancing the use of resources and expanding the reach of programs.

MUSEUM AND SOCIETY

CAMPAIGN FOR RECOMPOSITION OF COLLECTIONS

Started in September 2021 by the Museu Nacional/ UFRJ, the **Recompoe** campaign reaped good results in 2022. Minerals, taxidermied animals, fossils, archaeological materials and examples of African and Indigenous culture are among the pieces recently received by the institution.





CERAMICS FROM THE QUILOMBOLA COMMUNITY OF BURITI DO MEIO (MG) IS ONE OF THE PIECES RECENTLY DONATED TO THE MUSEUM

CREDITS: FRANCISCO MOREIRA DA COSTA, DIGITIZED COLLECTION OF THE SECTOR OF ETHNOLOGY AND ETHNOGRAPHY (MN/UFRR)

- 1.046 donated itens
- 60 donors from Brazil and overseas
- Safekeeping and conservation of collections received
- List of most desired collections
- Development of collections policy



PARIDEIRA STONE FROM AROUCA GEOPARK (PORTUGAL) IS ONE OF THE DONATIONS FROM THE INTERNATIONAL COMMUNITY

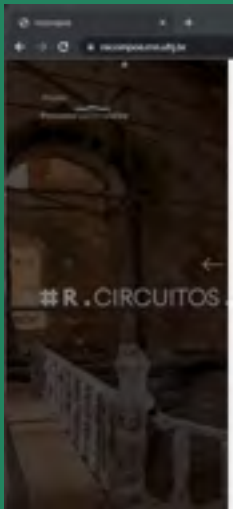
CREDITS: DIVULGAÇÃO

"The community itself selected the pieces, including a cooking pot produced more than 200 years ago and a container that performs a variety functions in our territory, such as storage of water and food. Our artisanship serves a wide range of purposes and our intention is to encourage reflection on life in quilombolas (traditional Indigenous/Black Brazilian communities) and the meaning of the land through art. Visitors to the museum will be able to see our land, our art, our love."

Wendell Lima

Representative from Quilombo Buriti do Meio (MG), which donated a series of ceramic pieces





MUSEUM AND SOCIETY NEW SITE

By accessing the website recompoe.mn.ufrj.br the public can follow the progress that is made through donations, navigate through the Gallery of Wishes, which consists of **36 pieces** that are highly desired by the Curation Committee, view donor testimonials, and find information on how to donate to the Museum and contribute to rebuilding efforts.

"I was very pleased to make a donation and was certain that it would not only to help recover everything that was lost in the fire, but serve science, particularly given how sought after this collection is. I have no doubt that, as a citizen, a lover of the sciences and a defender of nature, this collection is in the best possible hands."

Nando Reis
Musician and composer

Watch the full testimonial



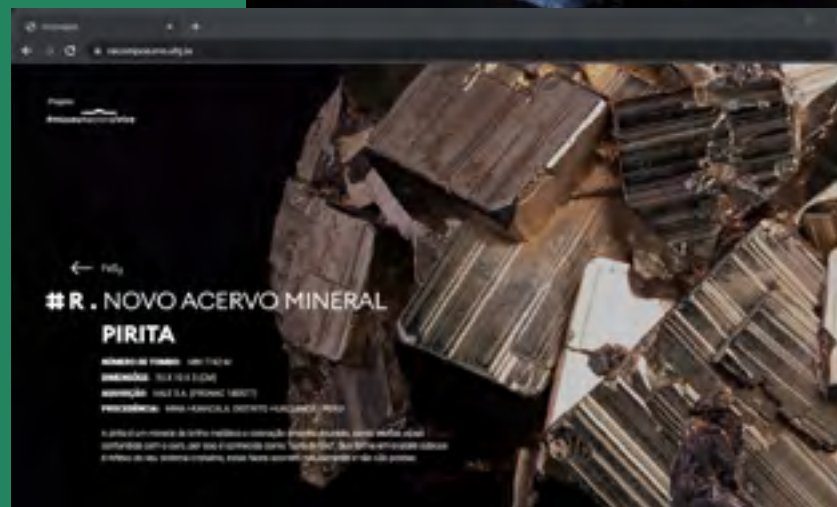
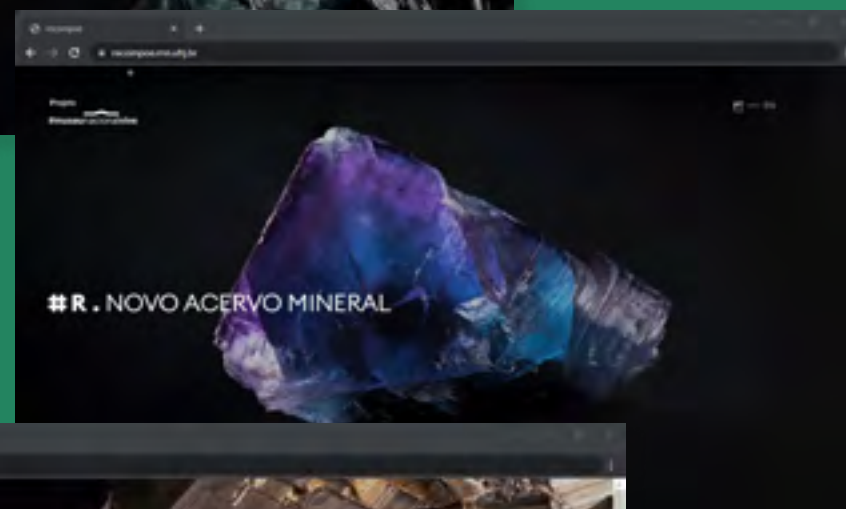
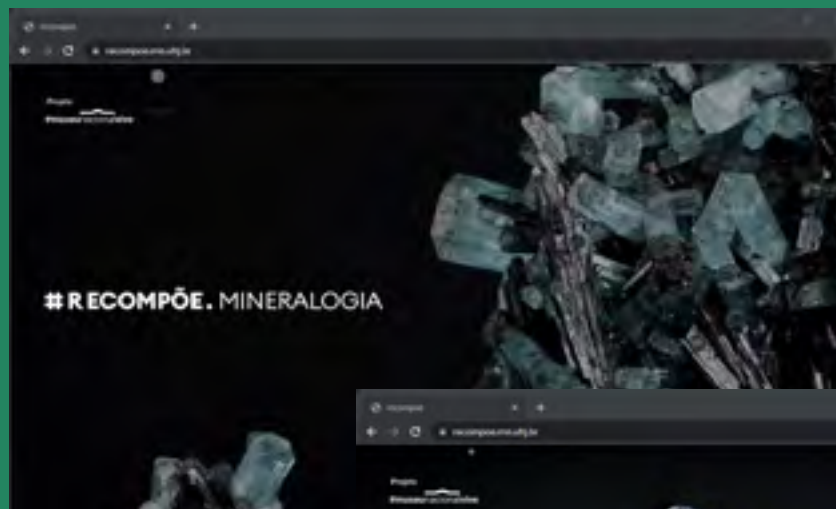
MUSEUM AND SOCIETY

RECOMPÕE. MINERALOGIA VIRTUAL EXHIBIT

Launched in December 2022, the exhibit invites the public through two virtual rooms. The first room presents images and scientific information about nine different minerals, two of which were recently donated and seven acquired through Vale's sponsorship under the Cultural Incentive Law.

The second part of the exhibit presents the transformations provoked by the fire through five items that were retrieved after the incident.

Access recompoe.mn.ufrj.br



THE PROJECT IN THE MEDIA

PRESS REPERCUSSIONS

ONLINE

5376

notícias

TV AND RÁDIO

233

news | 14 hours and 46 minutes

NEWSPAPERS
AND MAGAZINES

231

news

MEDIA VALUE

R\$ 171.315.368,00*

* Estimated budget based on advertisements tables, if a monetary value was attributed at the end of the period.

ESTADÃO



TV GLOBO



GLOBO NEWS



O GLOBO



THE PROJECT IN THE MEDIA

SOCIAL MEDIA

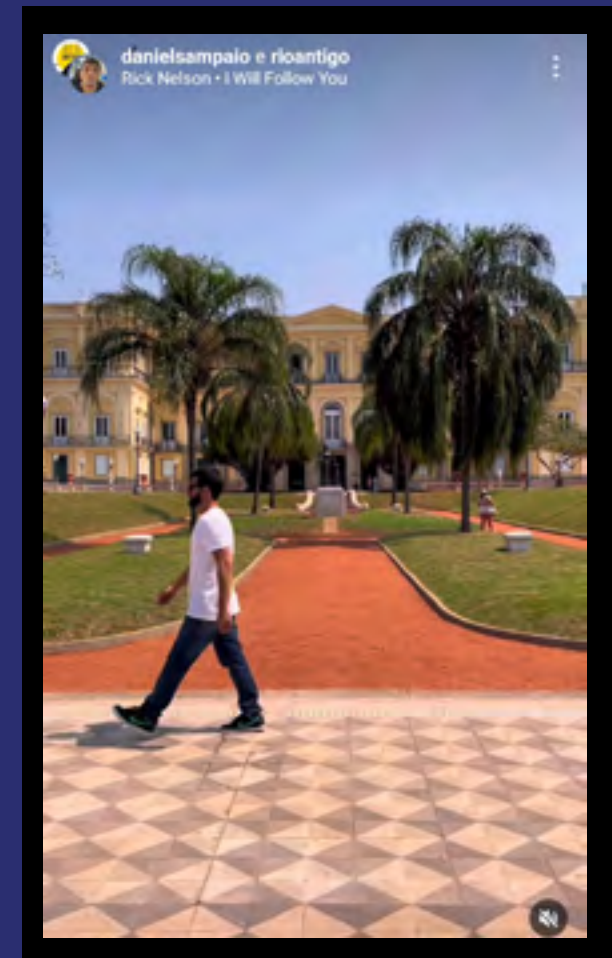
Focus on video dissemination about works and projects in progress

Dissemination of exhibits, educational and cultural activities

PARTNERSHIPS

2.616.754

users reached by digital influencers





MANAGEMENT AND TRANSPARENCY

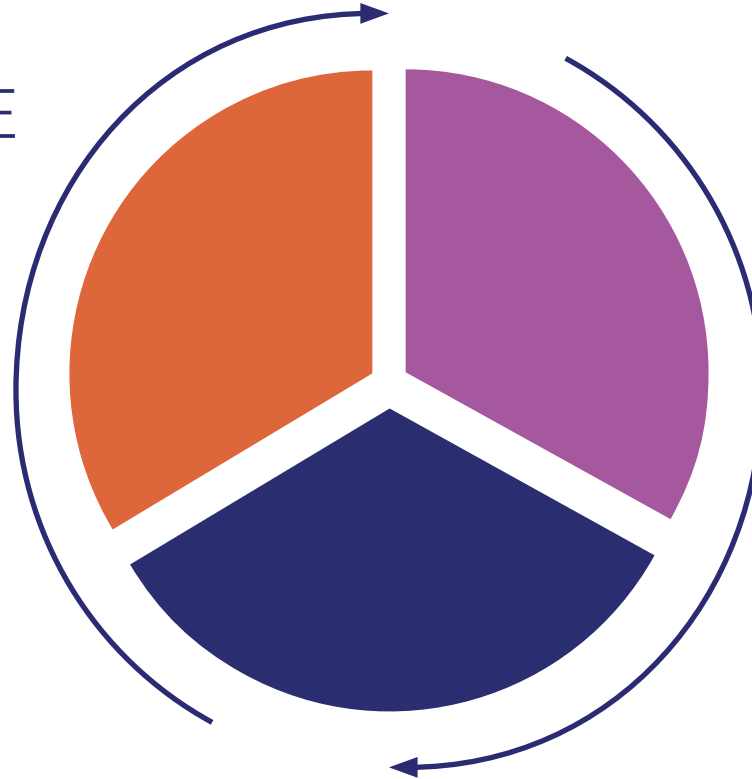
GOVERNANCE

The governance is centered on the following:

STEERING COMMITTEE + MANAGEMENT TECHNICAL WORKGROUP

A deliberative body responsible for planning, implementing, monitoring, communicating, and evaluating the Project and coordinating the Management Technical Workgroup.

Formed by representatives from UFRJ, Museu Nacional, UNESCO, Instituto Cultural Vale, and a civil society representative.



INSTITUTIONAL COMMITTEE

A consultive body who assures a permanent and transparent communication with society. It is formed by public, private, and governmental participants from: Academia Brasileira de Ciências, Câmara Comunitária de São Cristóvão, Germany, Portugal, Austria, the Goethe Institute, ICCROM, ICOM, SAMN, MEC, Rio de Janeiro City Hall, SBPC, UFRJ, Museu Nacional, BNDES, Instituto Cultural Vale, and UNESCO.

AFTER INAUGURATION, SAFETY AND SUSTAINABILITY WORKGROUP

Coordinated by BNDES, the Workgroup develops economic feasibility studies, organizational structure, management, and safety best practices for the Museu Nacional after its inauguration. Formed by representatives from UFRJ, Museu Nacional, UNESCO, Instituto Cultural Vale and SAMN.

MANAGEMENT

PRELIMINARY BUDGET

(IN MILLION)

ITEM	CURRENT BUDGET
I. Paço de São Cristóvão and anex Alípio de Miranda Ribeiro Restoration	R\$ 296,2
II. Research and Educative Campus Museu Nacional/UFRJ	R\$ 88,2
III. Central Library	R\$ 20,6
IV. Educative Actions / Communication	R\$ 6,4
V. Contingency	R\$ 21,9
TOTAL	R\$ 433,3 million

MANAGEMENT

FUNDRAISING

FEDERAL GOVERNMENT

Parliament's amendments	R\$ 56,4 million
MEC	R\$ 18,4 million
BNDES	RS 50 million
MCTI	RS 20 million

STATE GOVERNMENT

ALERJ	R\$ 20 million
-------	----------------

PRIVATE SECTOR

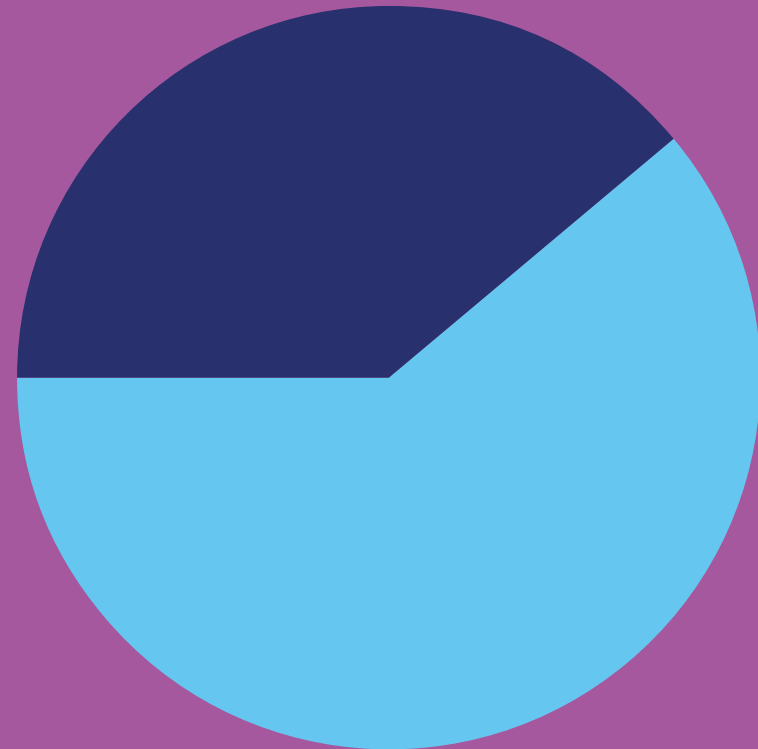
Vale	R\$ 50,5 million
BRADESCO	R\$ 50 million

TOTAL R\$ 265,3 million

TOTAL ESTIMATED BUDGET

R\$ 433,3 million

39% to be raised
R\$ 168 million



61% raised
R\$ 265,3 million

TIMELINE

2023

Delivery of renovation works and expansion of the Central Library

Delivery of works at the Research and Education Campus

Final delivery of the facade and roofing works for wing 1 (Paço de São Cristóvão)

Start of works on facades and roofing in wings 2, 3 and 4 at Paço

Architectural designs and supplementary documents completed



WING 1



WING 2



WING 3



WING 4

2024/2027

Start of works inside the Palace and Annex

Start of works in gardens

Delivery of facades and roofing in wings 2, 3 and 4 at Paço

Execution and delivery of works inside the Palace, Annex and Museography

Execution and delivery of works in gardens

Assembly of exhibit

Museu Nacional/UFRJ completely reopened



BODIES RESPONSIBLE FOR WORKS

STEERING COMMITTEE

UFRJ AND MUSEU NACIONAL

Denise Pires de Carvalho
UFRJ Rector

Alternate: **Fernando Ribeiro**
Professor at COPPE/UFRJ

Carlos Frederico Leão Rocha
UFRJ Vice Dean

Alternate: **João Carlos Ferraz**
Professor at UFRJ Institute
of Economics

Alexander Kellner
Director of the Museu Nacional/UFRJ

Alternate: **Ronaldo Fernandes**
Adjunct Technical-Scientific Director of
the Museu Nacional/UFRJ

UNESCO

Marlova Jovchelovitch Noletto
UNESCO Director
and Representative in Brazil

Alternate: **Isabel de Paula**
Culture Sector Coordinator

VALE CULTURAL INSTITUTE

Hugo Barreto
President-Director

Alternate: **Luciana Gondim**
Executive Director

Flavia Constant
Vice-President of the Strategic
Council Vale

Alternate: **Marize Mattos**
Sponsorship Coordinator

CIVIL SOCIETY REPRESENTATIVE

Marcelo Mattos Araujo
Museologist and lawyer

BODIES RESPONSIBLE FOR WORKS

INSTITUTIONAL COMMITTEE

Denise Pires de Carvalho

UFRJ Dean

Alexander Kellner

Director of the Museu Nacional/UFRJ

Krista Pikkat

UNESCO Director of Culture
and Emergencies

Luciana Gondim

Executive director
of Vale Cultural Institute

Julio Costa Leite

BNDES Public and Socioenvironmental
Management Deputy Managing Director

Sávio Luis Ferreira Neves Filho

Secretary of Tourism of the Government
of the State of Rio de Janeiro

Renata Motta

ICOM Brazil President

Maria Vargas

Brazilian Academy of Sciences
(ABC) President

Otávio Guilherme Cardoso Alves Velho

Brazilian Society for the Progress
of Science (SBPC)

José Luiz Pedersoli

International Centre for the Study of the
Preservation and Restoration of Cultural
Property (ICCROM)

Juarez Maia de Carvalho

Technical Director of the São Cristóvão
Community Chamber

Sophia Hirthammer

Government of Germany

Joachim Schemel

Consulate General of Germany in Rio de
Janeiro

Carola Lentz

President of the Goethe Institute

Isabel Holzl

Instituto Goethe Rio de Janeiro

Rita Jerônimo

Government of Portugal

Alexandra Pinho

Director of Instituto Camões

Judith Schildberger

Government of Austria

Maria Carolina Machado Mello de Sousa

Ministry of Education

Mariângela Menezes

President of the 'Amigos do Museu
Nacional' Association

BODIES RESPONSIBLE FOR WORKS

MANAGEMENT TECHNICAL WORKGROUP

UFRJ and MUSEU NACIONAL

Carlos Frederico Leão Rocha
UFRJ Vice-Rector

João Carlos Ferraz
Professor at UFRJ Institute of
Economics

Alexander Kellner
Museu Nacional/UFRJ Director

UNESCO

Isabel de Paula
Culture Sector Coordinator

Diogo Carvalho
Project Officer (Culture)

Antía Vilela Díaz
Project management consultant
(Culture)

VALE CULTURAL INSTITUTE

Hugo Barreto
President-Director

BNDES

Fabício Brollo Dunham
Urban Development, Tourism,
and Culture Department
Manager

SAMN

Mariângela Menezes
President

COORDENAÇÃO

Lucia Basto
Project Museu Nacional Vive
Executive Manager

Patricia Hockensmith
Project Museu Nacional Vive
Institutional Development
Coordinator

AFTER INAUGURATION SAFETY AND SUSTAINABILITY WORKGROUP

Luciane Gorgulho
Chief of the BNDES Development,
Culture and Tourism Division

Alternate: **Fabício Brollo**
BNDES Urban Development, Culture
and Tourism Division Manager

Carlos Frederico Leão Rocha
UFRJ Vice-Rector

Alternate: **João Carlos Ferraz**
Professor at UFRJ Institute of Economics

Alexander Kellner
Director of the Museu Nacional/UFRJ

Alternate: **Mariah Martins**
Chief of Cabinet of
the Museu Nacional/UFRJ

Isabel de Paula
UNESCO Culture Sector Coordinator

Alternative: **Sylvio Carneiro de Farias**
Consultor da UNESCO

Hugo Barreto
President-Director of Vale Cultural
Institute

Alternate: **Luciana Gondim**
Executive Director of Vale Cultural
Institute

Mariângela Menezes
SAMN President

Alternate: **Rosemeri Orth**
SAMN Finance Manager

Lucia Basto
Museu Nacional Vive Project
Executive Manager

Alternate: **Patricia Hockensmith**
Project Museu Nacional Vive
Institutional Development
Coordinator

BODIES RESPONSIBLE FOR WORKS

TECHNICAL TEAM

UNESCO CONSULTANTS

Lucia Basto
Lead manager

Ana Lúcia Gonçalves
Coordinated and Integrated
Management

Antía Vilela Díaz
Project management

Sylvio Carneiro de Farias
Executive Management

Maria Amélia de Mello Galvão
Executive Management

Nathália Rocha
Executive Management

Claudia Coutinho
Executive Management

Caio Dias
New Exhibitions Management

Luiz de Figueiredo
Administrative Management

Tiago Montenegro
Strategic Communication Coordinator

Renata Baltar
Advising on national and international
cooperation for new acquisitions

SAMN CONSULTANT

Patricia Hockensmith
Institutional Development

MUSEU NACIONAL/UFRJ

HISTORICAL, ARCHITECTURAL
AND MUSEOGRAPHICAL
CONTENT

Maria Paula van Biene
Technical Office Chief Architect
of the Museu Nacional/UFRJ

Thais Mayumi
Museologist of the Museu
Nacional/UFRJ

Amanda Cavalcanti
Museologist of the Museu
Nacional/UFRJ

Guilherme Machado
Museologist of the Museu
Nacional/UFRJ

Paulo Victor Catharino Gitsin
Museologist of the Museu
Nacional/UFRJ

MANAGING INSTITUTIONS

The actions of the Project are financed with private and public resources. The following institutions were assigned to manage these resources and implement the planned activities:

Associação Amigos do Museu Nacional (SAMN)

www.samn.org.br

Fundação Coordenação de Projetos Pesquisas e Estudos Tecnológicos (COPPETEC)

www.coppetec.coppe.ufrj.br

Fundação José Bonifácio (FUJB)

www.fujb.ufrj.br

UFRJ

www.ufrj.br

UNESCO

pt.unesco.org/fieldoffice/brasil

BODIES RESPONSIBLE FOR WORKS

RESEARCHERS FOR NEW EXHIBITS

UNESCO MANAGEMENT

Aline Chaves Rabelo

African and Afro-Brazilian Cultures

Carolina Bezerra Machado

Social History

Célia Helena Cezar Boyadjian

Archeology

Conrado Vieira

Microbiology

Cristine Carole Muggler

Geology

Edmar Santos

Biological Anthropology

Elder de Oliveira Sodr 

Ecology

Fernanda Ribeiro Amaro

Indigenous Cultures

Fernando Coreixas de Moraes

Evolutionary Biology

Fl via Requeijo

Astronomy

Janaina Lacerda Furtado

History of Science

Joaquim Ara jo

African and Afro-Brazilian
Cultures

Josiane Kunzler

Paleontology

Juliana Lopes Segadilha

Evolutionary Biology

Let cia Costa Rodrigues

Vianna

Social Anthropology

Nely Palermo

Geology of Brazil

Rafael Santana Gonalves

de Andrade

Indigenous Ethnology

Victor Emmanuel Abalada

Social History

CONCEPTION OF NARRATIVES FOR THE NEW EXHIBITS

UNESCO MANAGEMENT

Andres Clerici

Creation diretor

Carlos M. Rodriguez

Design Director

Coca Albers

Art director

BODIES RESPONSIBLE FOR WORKS

DESIGNERS, COMPANIES AND TECHNICAL CONSULTANTS

UNESCO MANAGEMENT

H+F Arquitetos e Atelier de Arquitetura

Architecture and restoration

Marcos Holtz

Acoustics

PBSoluções de Engenharia Ltda

Anchoring

Integrar Climatização Ltda

Air conditioning

RPM Engenharia e Sistema Contra Incêndio Ltda

Firefighting

Igor Alvim

Frames: glass and frames

ENGETI Consultoria e Engenharia S.S. Ltda

Structure

Pedro Bosco Mota Pinto

Flow

Ld Studio Projetos de Iluminação

Lighting

Cetimper Consultoria de Engenharia Ltda

Waterproofing

Nestor Dale Caiuby Neto

Hydraulic installations – preliminary Study and preliminary project

Claudio dos Reis Corrêa

Building Installations – electrical and SPDA preliminary study

Spalla Engenharia Eireli

Building installations

Geomap Engenharia e Topografia Ltda

Planaltimetric survey

Contier Arquitetura S/S

Topographic survey and BIM modeling

Flug Soluções e Tecnologias Ltda

BIM modeling

Expomus – Exposições Museus e Projetos Culturais

Museography, visual communication and universal accessibility

EMBYÁ Paisagismo, Urbanismo e Arquitetura Ltda

Landscaping

Velatura Restaurações Ltda

Pre-Consolidation and protection of integrated assets of wing 1

Guilherme Neves Castagna

Water relocation / drainage

Jugend Controle Predial Eireli

Electronic systems

Seed Solution Engenharia Ltda

Sustainability

Artur de Miranda Salvaterra

Vertical transport

MANAGEMENT

Setec Hidrobrasileira Obras e Projetos Ltda

Project management

GDP Gerenciamento e Desenvolvimento de Projetos

BIM Management and coordination

SYSTEMS

Construtivo – Bimtrack

Virtual platform

WORKS PAÇO DE SÃO CRISTÓVÃO

Construtora Biapó Ltda

Pre-consolidation and protection of integrated assets

COMMUNICATION

Felipe Cohen

Photography and video

Nancy Torres

Designer

Mércia Ribeiro

Internal communication

BODIES RESPONSIBLE FOR WORKS

DESIGNERS, COMPANIES AND TECHNICAL CONSULTANTS

SAMN MANAGEMENT

PAÇO DE SÃO CRISTÓVÃO

Concrejato Serviços

Técnicos de Engenharia S.A

Restoration of facades, frames, new roofs and structural recovery of Block

Velatura Restaurações Ltda

Management

AF Projetos de Engenharia Ltda Epp e Resgate Consultoria em Patrimônio

Technical monitoring

CENTRAL LIBRARY

Onetek Engenharia Ltda

Management

Consórcio HMA – BETHON – CEMOPE – INTEGRAR – BOSCO – PRINST

Architectural executive project for renovation and modernization

Henrique Mindlin Arquitetos Associados Ltda (HMA)

Bethon Stahlcemope Consultoria e Projetos Ltda – Epp Engenharia P
CEMOPE Consultoria e Projetos Ltda

Integrar Climatização Ltda, Bosco & Associados Ltda – EPP

Prinst Engenharia de Segurança contra incêndio Ltda

Retrofit – Engenharia de Serviços Ltda

Revitalization and expansion works, building installations, electrical, hydraulics, rainwater, SPDA, sewage, firefighting and special facilities

ARCHAEOLOGICAL MONITORING

Dr. Marcos André Torres de Souza (MN/UFRJ)

Lead coordinator

Ms. Andrea Cavalcanti de Albuquerque Jundi Morgado

Field and laboratory coordinator

Ms. Marina Coppoli Dias de Miranda

Archeologist

Maria Luísa Soares Maciel

Archeologist

LEGAL ADVISORY

Lins de Vasconcelos Advogados

COMMUNICATION

Lapa Comunicação

Social networks

Trevo Comunicativa

Press office

FUJB MANAGEMENT

LABORATORY MODULES
EMERGENCY ON CAMPUS OF
RESEARCH AND TEACHING

Soloteste Engenharia Ltda

Engineering survey

Archi 5 Arquitetos Associados Ltda

Basic and executive projects

Vento Sul Engenharia Ltda

Construction

Archi 5 Arquitetos Associados Ltda

Management and inspection

LABORATORY FOR HANDLING OF
COLLECTIONS IN LIQUID MEDIUM

Econômica Engenharia e Obras Ltda

Basic and executive projects

COPPETEC MANAGEMENT

ADVANCED RESEARCH
EQUIPMENTS

Carl Zeiss (Fabricante e Fornecedora)

Microtomograph (XRM 515 System)

Scanning electron microscope

(EVO10)

PROJETO MUSEU NACIONAL VIVE



COOPERAÇÃO



APOIO FINANCEIRO



PATROCÍNIO PLATINA

BENEMÉRITOS



PROPONENTES

ASSOCIAÇÃO AMIGOS DO MUSEU NACIONAL
FUNDAÇÃO COPPETEC
FUNDAÇÃO UNIVERSITÁRIA JOSÉ BONIFÁCIO
PR6 UFRJ
UNESCO

APOIO

MINISTÉRIO DA
EDUCAÇÃO

MINISTÉRIO DA
**CIÊNCIA, TECNOLOGIA
E INOVAÇÃO**

REALIZAÇÃO

MINISTÉRIO DA
CULTURA





MUSEUNACIONAL**VIVE**.ORG.BR